



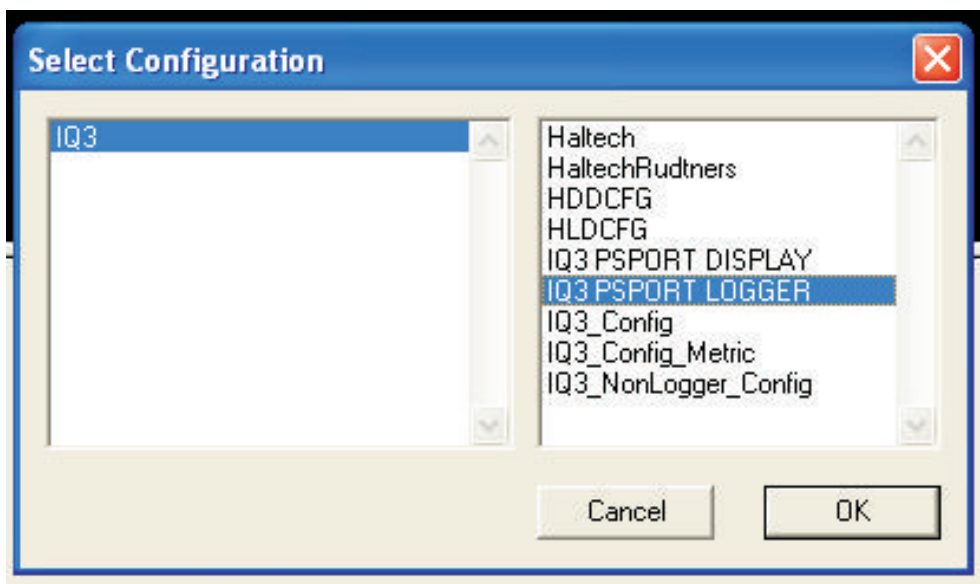
Haltech USA  
704 Downs Ave.  
Lexington, KY  
(P) 760-598-1941  
(F) 760-598-1987  
usa@haltech.com

## RACEPAK IQ3 LOGGER DASH PROGRAMMING

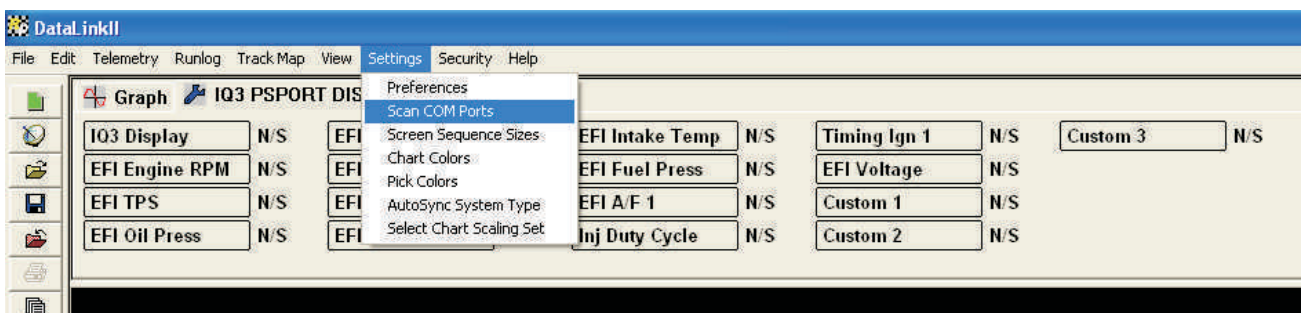
To program an IQ3 Display Dash, follow the steps below.

- 1) Connect the IQ3 dash to your Haltech Platinum Sport ECU - Supply Power to the ECU
- 2) Connect the IQ3 dash to your laptop via the Serial to USB Adapter
- 3) Open the Racepak Datalink Software
- 4) Press CTRL+Z and select the file [IQ3 PSPORT LOGGER](#).

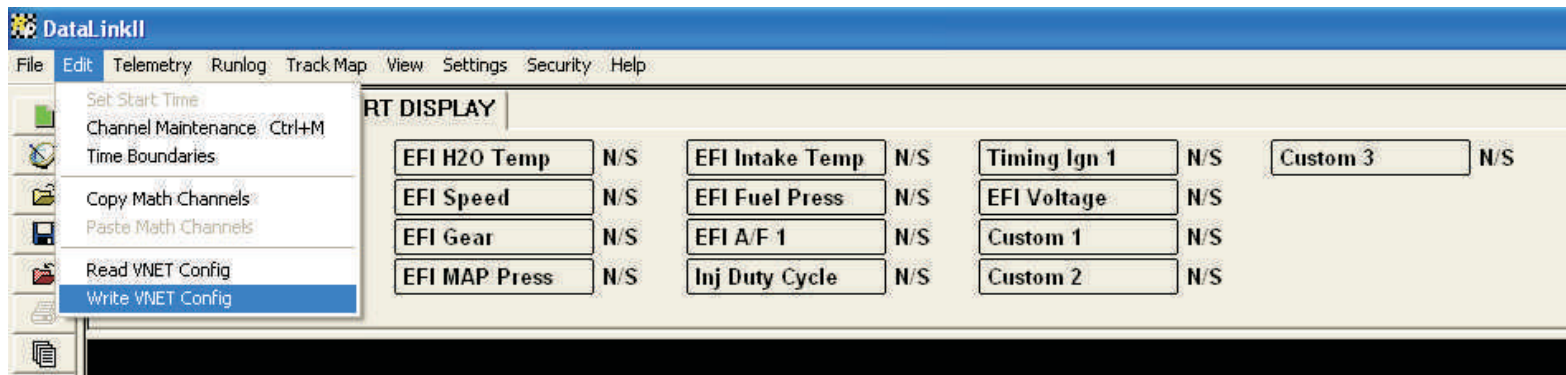
This file must be placed in C:\RacepakData\IQ3 and can be downloaded from the Haltech website [here](#)



- 5) Go to Settings--> Scan Com Ports

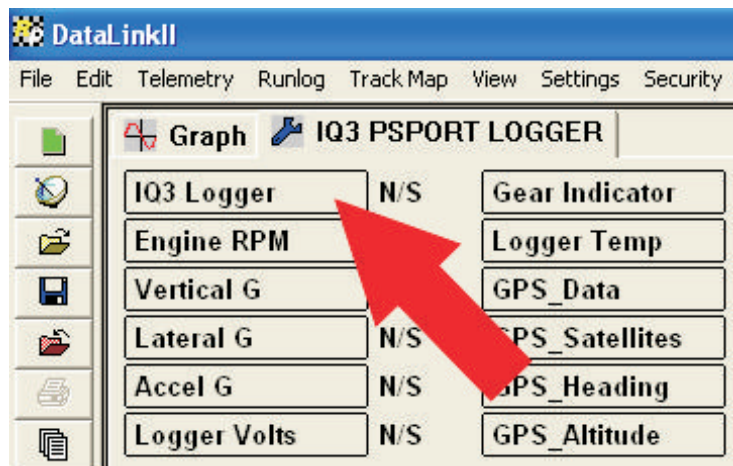


6) Go to Edit--> Write VNET Config

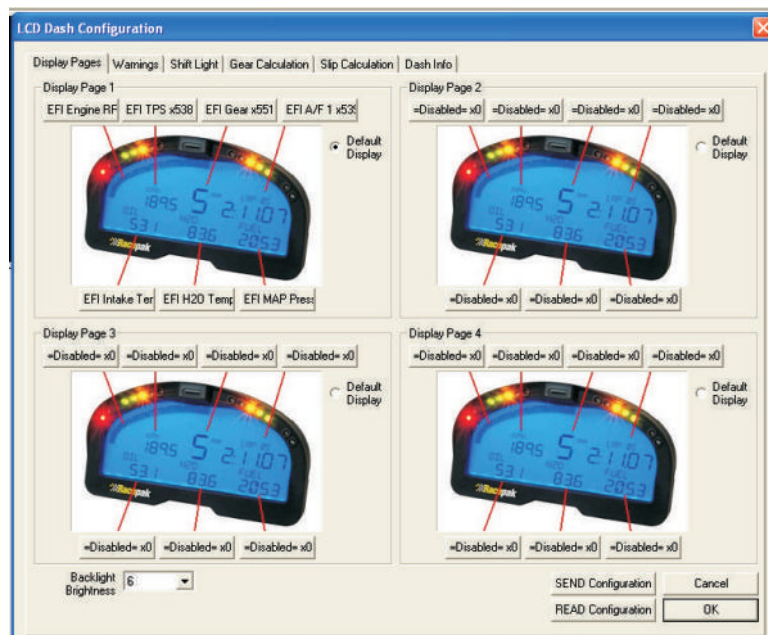


7) After all the Channels have been written, the IQ3 Logger Dash is now ready for use and custom screen setups.

8) By default, the Iq3 Logger dash will display RPM, GPS Based Speed, AFR, Coolant Temp in F, Intake Air Temp in F, and Manifold Pressure in PSI. To change these, Right Click on the Channel IQ3 Logger.



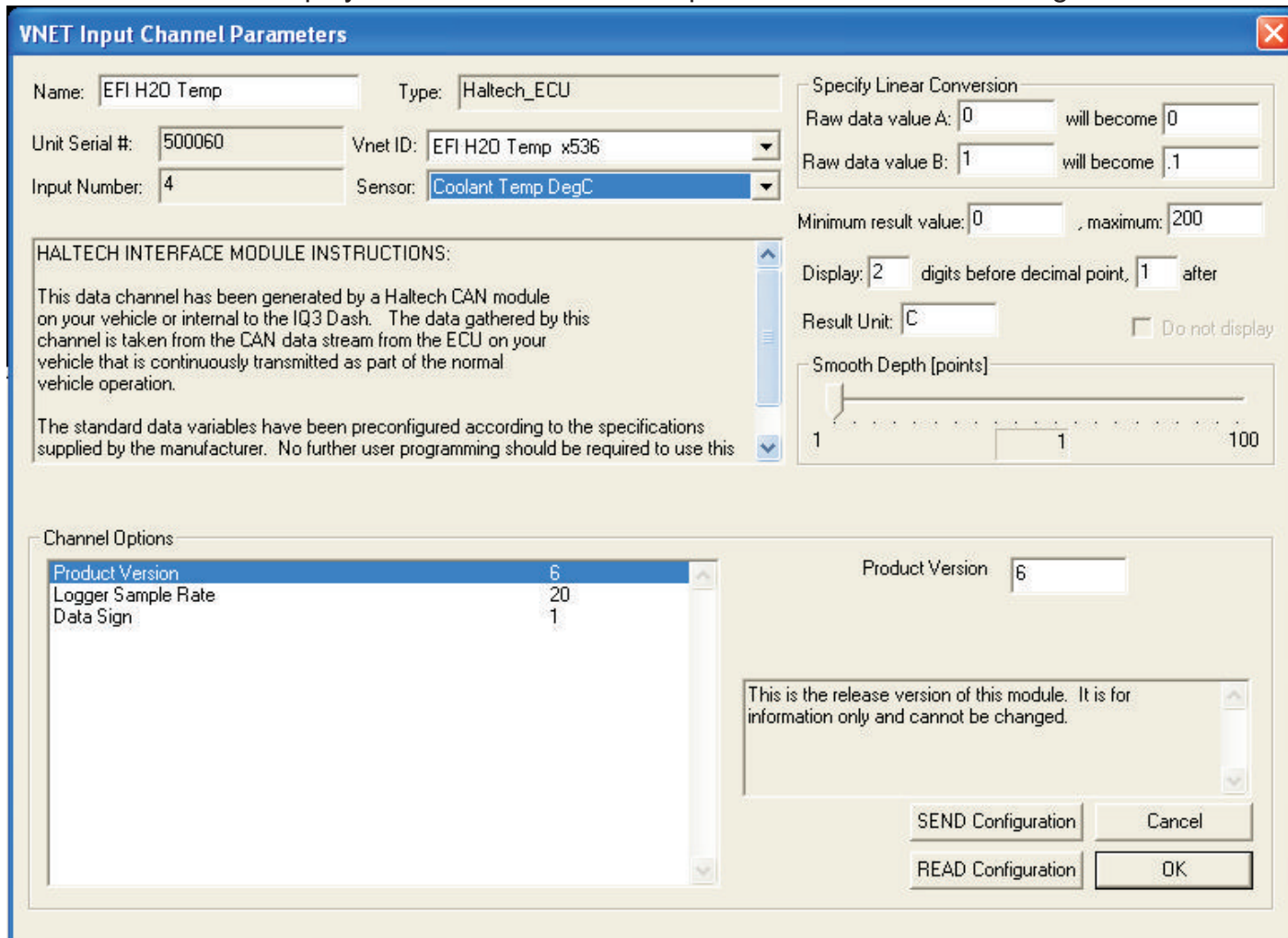
9) The LCD Dash Configuration Screen will pop up.







- 16) For this example, we are going to use the EFI H2O Temp Channel and change from Degrees Celsius to Degrees Fahrenheit. Upon Right Clicking the Channel you should see the following.  
This display is known as the VNET Input Channel Parameters Page.



**VNET Input Channel Parameters**

Name:  Type:

Unit Serial #:  Vnet ID:

Input Number:  Sensor:

**Specify Linear Conversion**

Raw data value A:  will become

Raw data value B:  will become

Minimum result value:  , maximum:

Display:  digits before decimal point,  after

Result Unit:  ☐ Do not display

Smooth Depth [points]:

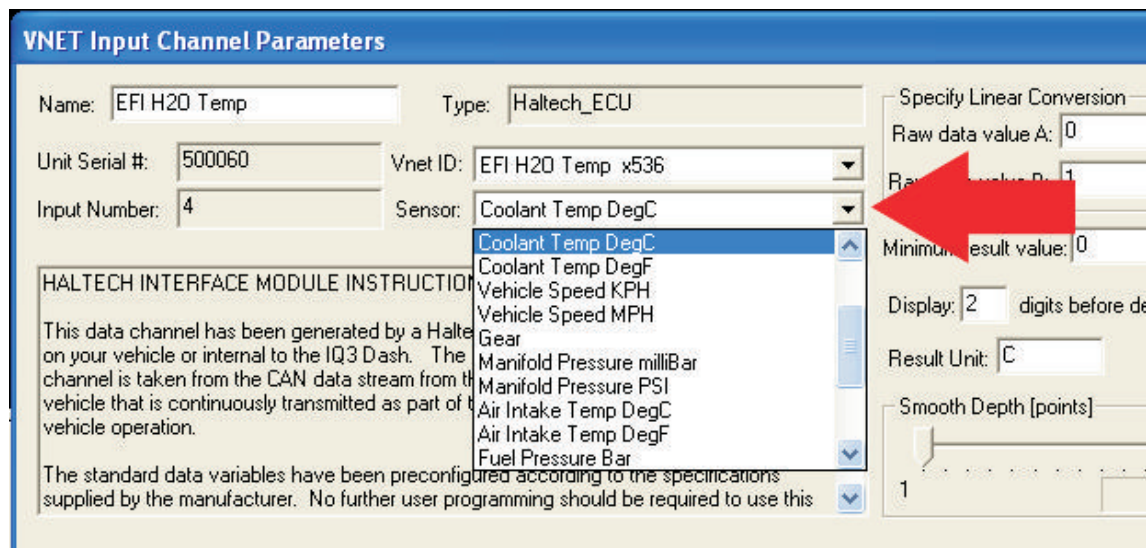
**Channel Options**

Product Version	6
Logger Sample Rate	20
Data Sign	1

Product Version

This is the release version of this module. It is for information only and cannot be changed.

- 17) To change the units displayed, Left Click on the Drop down button for the box "Sensor" and Click on Coolant Temp DegF to change to Fahrenheit.



**VNET Input Channel Parameters**

Name:  Type:

Unit Serial #:  Vnet ID:

Input Number:  Sensor:

**Specify Linear Conversion**

Raw data value A:  will become

Raw data value B:  will become

Minimum result value:  , maximum:

Display:  digits before decimal point,  after

Result Unit:  ☐ Do not display

Smooth Depth [points]:

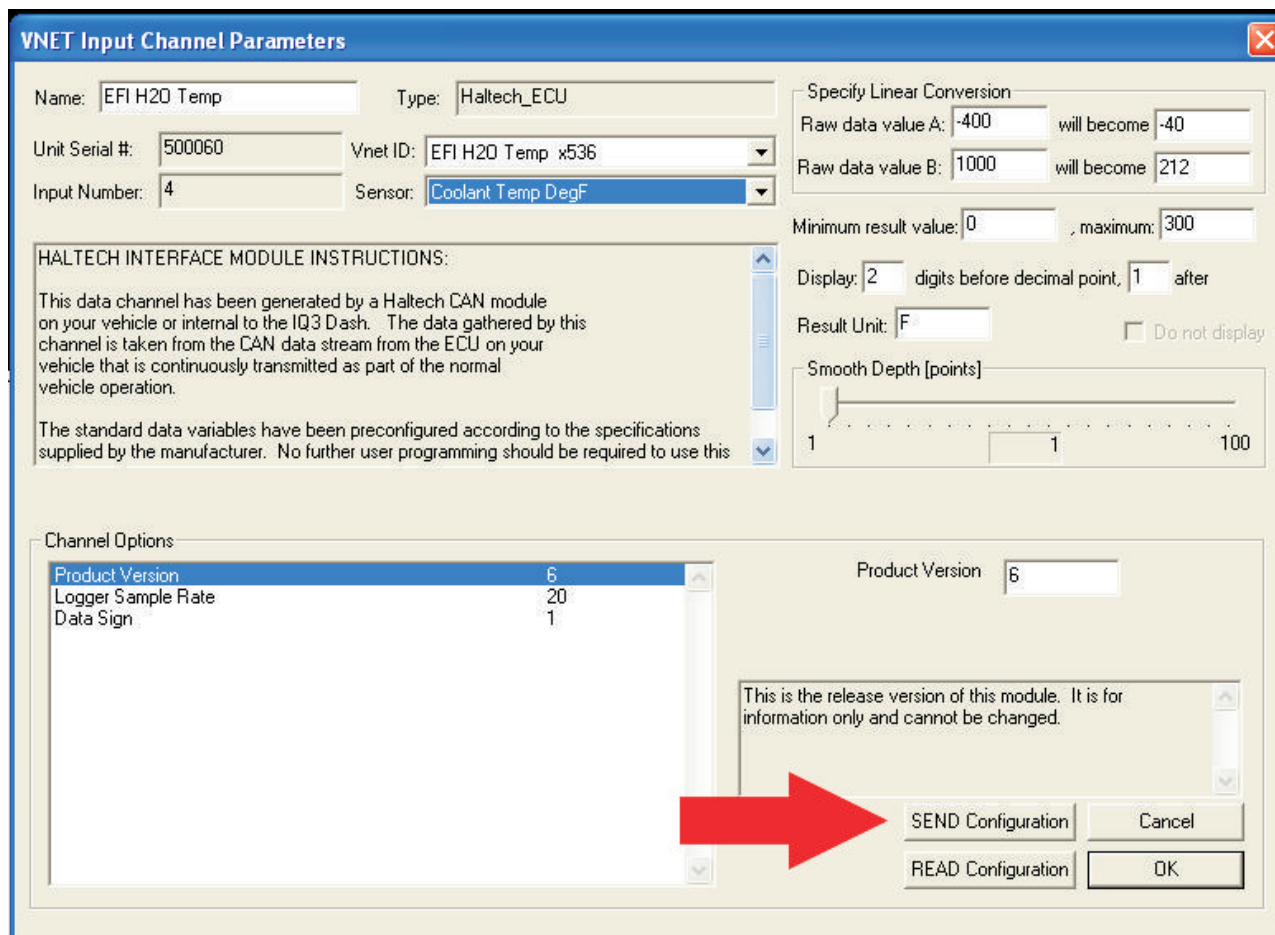
**Channel Options**

Product Version	6
Logger Sample Rate	20
Data Sign	1

Product Version

This is the release version of this module. It is for information only and cannot be changed.

- 18) Click Send Configuration. The new units should be displayed on your IQ3 Dash. Check this value against the displayed value in the Haltech ECU Manager software to ensure that the proper value is being displayed.



**VNET Input Channel Parameters**

Name:  Type:

Unit Serial #:  Vnet ID:

Input Number:  Sensor:

**Specify Linear Conversion**

Raw data value A:  will become

Raw data value B:  will become

Minimum result value:  , maximum:

Display:  digits before decimal point,  after

Result Unit:  ☐ Do not display

Smooth Depth [points]:

**HALTECH INTERFACE MODULE INSTRUCTIONS:**

This data channel has been generated by a Haltech CAN module on your vehicle or internal to the IQ3 Dash. The data gathered by this channel is taken from the CAN data stream from the ECU on your vehicle that is continuously transmitted as part of the normal vehicle operation.

The standard data variables have been preconfigured according to the specifications supplied by the manufacturer. No further user programming should be required to use this

**Channel Options**

Product Version	Logger Sample Rate	Data Sign
6	20	1

Product Version

This is the release version of this module. It is for information only and cannot be changed.

**SEND Configuration** **Cancel**

**READ Configuration** **OK**

- 19) Do this for all channels you wish to alter. You **MUST** be using Racepak Datalink II Software version 3.5.1 or newer for this to work properly.
- 20) Everything should now be displaying correctly and in the proper units on your IQ3 Logger Dash. For information on connecting your IQ3 to your Haltech Platinum Series ECU, please click [here](#).

Thank you for choosing Haltech Engine Management Systems and the Racepak IQ3 as your total solution for Engine Management and Data Acquisition.